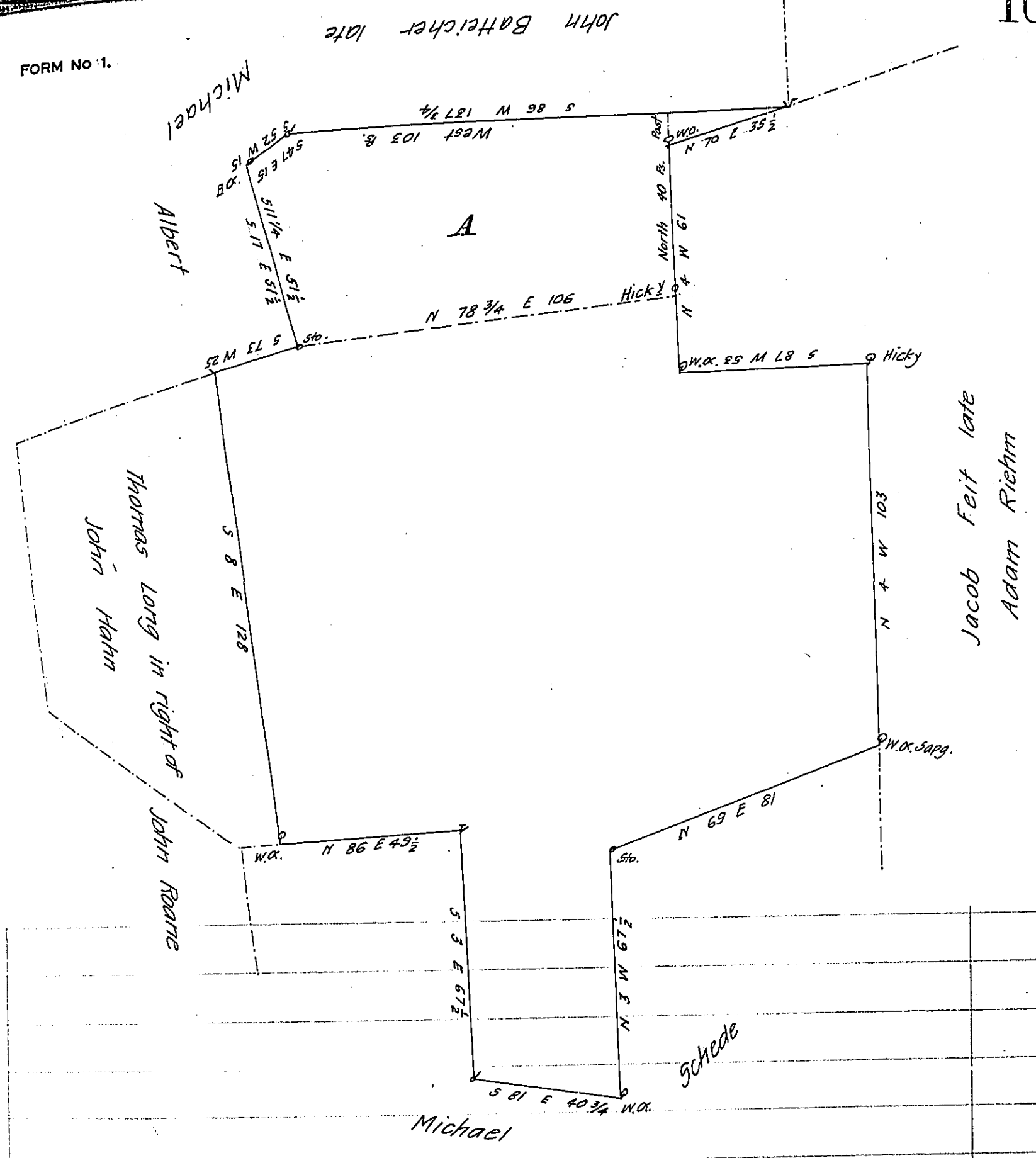


FORM No. 1.



Sketch of a Survey made in pursuance of a Warrant dated the 18th June 1790 granted to Thomas Long Cont^g 192^{as} 63 P. & Co. Situate in Tulpehocken township Berks County.

A. was originally surveyed on an Application No 579 dated August 21, 1765 granted John Hahn cont^g A^s 32 - 96 Ps. & all^s Sept^r 1. 1829

Gabriel Hiester Esq^r Matthias S. Richards D.S.
 Surveyor General.

IN TESTIMONY that the above is a copy of the original remaining on file in the Department of Internal Affairs of Pennsylvania, made conformably to an Act of Assembly approved the 16th day of February, 1833, I have hereunto set my Hand and caused the Seal of said Department to be affixed at Harrisburg, this eighteenth day of June 1908

Henry Houck
 Secretary of Internal Affairs.